

CONTACT

GLOBAL HEADQUARTERS

UBIMET GmbH
ARES Tower
Donau-City-Straße 11
1220 Vienna
Austria
T +43 1 263 11 22 0
F +43 1 263 11 22 219
E info@ubimet.com
www.ubimet.com

AUSTRALIA

UBIMET Pty Ltd
Level 20, 350 Queen Street
Melbourne VIC 3000
T +61 3 8488 7610
E sales.au@ubimet.com

USA

UBIMET North America Inc.
61 Broadway
New York, NY, 10006
T +1 646 690 42 00
E usa@ubimet.com

ABOUT UBIMET

UBIMET is a leading commercial provider of precise meteorology services and severe weather warnings. The global company headquartered in Vienna, Austria has offices in Karlsruhe, Melbourne, Munich, New York and Zurich employing 250 staff from 25 nations. UBIMET provides high-quality meteorological data, forecasts and alerts enabling weather-dependent industries around the globe to increase safety and efficiency.

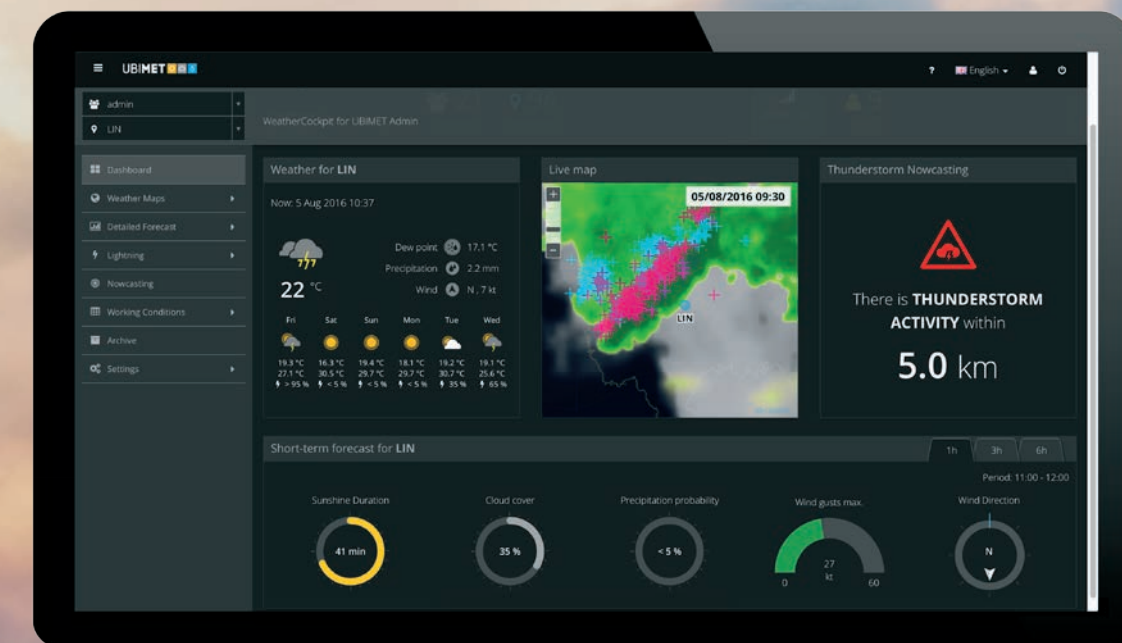
UBIMET's expertise and reliable weather solutions have convinced customers from industries such as aviation and rail, construction, energy, insurance, media as well as event organizers. UBIMET has delivered accurate weather data for Formula 1 since 2014.

The company was founded as a start-up by Michael Fassnauer and Manfred Spatzierer in Vienna in 2004. The two founders, driven by a passion for meteorology, are still the driving force behind the company today. Red Bull has been a strategic partner since 2012 expanding the company's global reach.

© 2016 UBIMET. All rights reserved. Printed in Austria 01/08-2016/en

AVIATION WEATHER COCKPIT

HIGH-PRECISION FORECASTS FOR SAFE & EFFICIENT AIRPORT OPERATIONS



GROUP MEMBERS

EWC Weather Consult GmbH
Schönfeldstraße 8
D-76131 Karlsruhe
T +49 (0)721 663 23 0
E info@weather-consult.com

MeteoNews AG
WETTERBÜRO
Siewerdtstrasse 105
CH-8050 Zürich
T +41 43 288 40 50
F +41 43 288 51 31
meteonews.de

nowcast GmbH
Albert-Roßhaupter-Straße 43
81369 Munich
T +49 89 552 97 13 70
E info@nowcast.de
www.nowcast.de



YOUR CHALLENGES

OUR FEATURES

YOUR BENEFITS



WHEN TO STOP AND RESUME GROUND-HANDLING ACTIVITIES



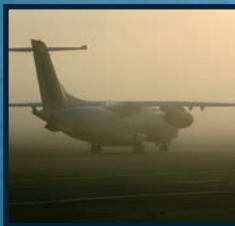
OPTIMAL SCHEDULING OF GROUND-HANDLING RESOURCES



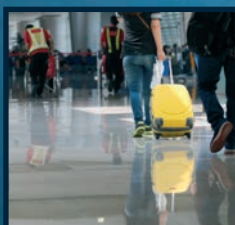
WHETHER AND WHICH SNOW-CLEARING EQUIPMENT WILL BE REQUIRED



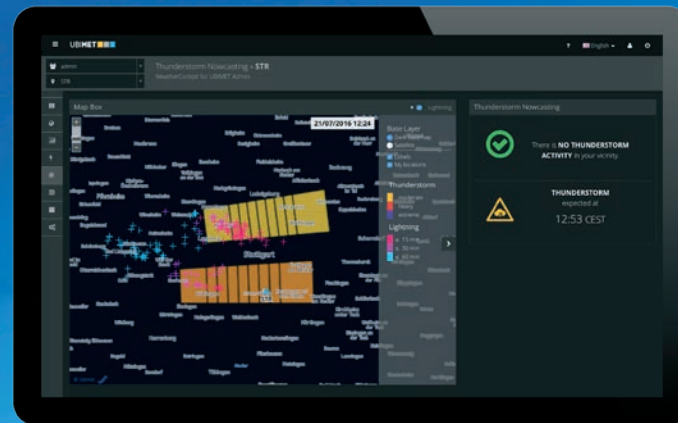
ANTICIPATING CONDITIONS REQUIRING DE-ICING



PREPARING FOR DISRUPTIVE WEATHER PATTERNS



GUIDANCE ON SAFETY FOR PASSENGERS AND EMPLOYEES



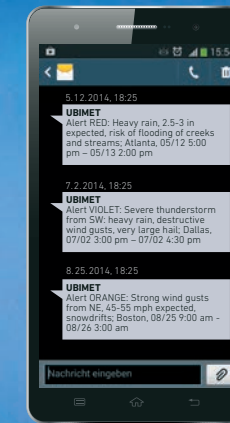
THUNDERSTORM TRACKING

- Detecting thunderstorms in the vicinity of the airport
- Short-term forecasts of thunderstorm movements
- Calculating estimated thunderstorm arrival time
- Distributing early warnings via Aviation Weather Cockpit, e-Mail and text message

22°

WARNINGS AND ALERTS

- Weather-related warnings when parameter thresholds are exceeded (e.g. wind, temperature, precipitation, snow)
- Severe weather warnings provided by meteorologists
- Ability to precisely define user groups receiving alerts
- Distributing early warnings via Aviation Weather Cockpit, e-mail and text message

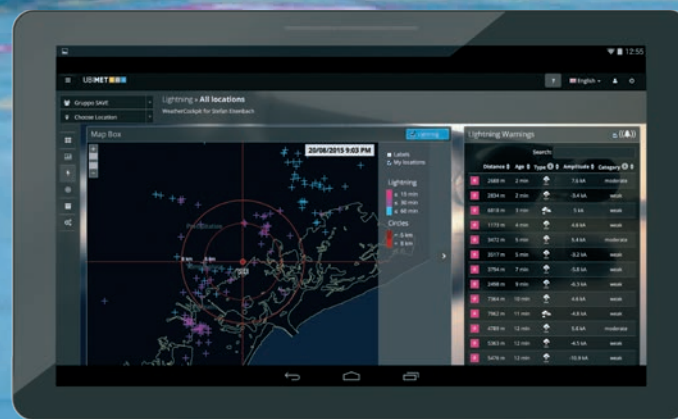


INCREASE EFFICIENCY

- Reduce ground-handling downtimes
- Maximize airport capacity
- Facilitate automated decision-making
- Anticipate disruptive events earlier
- Adapt resource planning to weather situation

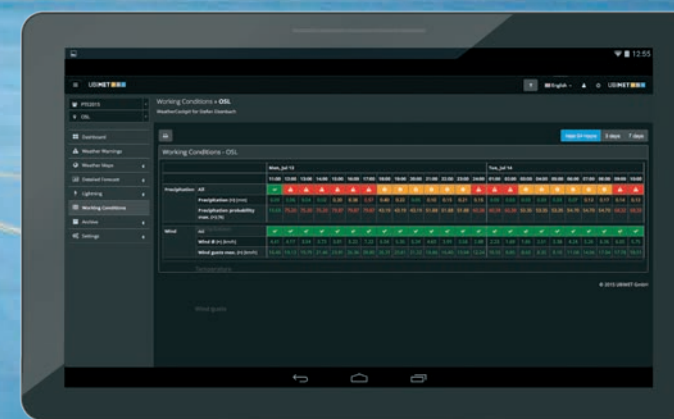
REDUCE COSTS

- Economical resource planning
- Reduce additional costs resulting from over- or understaffing
- Optimize allocation of standby resources
- Reduce cost due to lost capacity
- Reduce accident-related claims



LIGHTNING DETECTION

- Patented 3-D measurement algorithm
- Real-time lightning information
- Accuracy within 75 meters
- Ability to precisely define lightning alarms (e.g. ICAO 8/5 km radius recommendation)



PLANNING CALENDAR

- Optimized planning for ground operation shifts and resources
- Automatic alignment with meteorological forecasts
- Displayed as green / yellow / red days in Aviation Weather Cockpit
- Planning horizon of up to 8 days

ENHANCE SAFETY

- Enable proactive safety measures by early and accurate weather warnings
- Reduce the risk of weather-related injuries to passengers and employees
- Prevent damages to aircraft and infrastructure
- Enhance overall sense of security
- Increase customer and employee satisfaction

18°