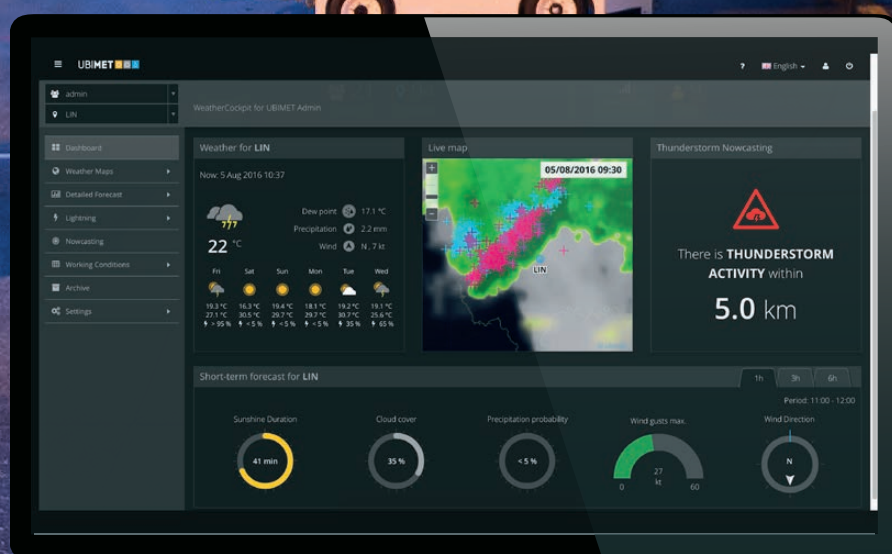


AVIATION WEATHER COCKPIT

HIGH-PRECISION FORECASTS FOR
SAFE & EFFICIENT AIRPORT OPERATIONS



YOUR CHALLENGES



WHEN TO STOP AND
RESUME GROUND-
HANDLING ACTIVITIES



OPTIMAL SCHEDULING
OF GROUND-HANDLING
RESOURCES



WHETHER AND WHICH
SNOW-CLEARING
EQUIPMENT WILL BE
REQUIRED



ANTICIPATING
CONDITIONS
REQUIRING DE-ICING

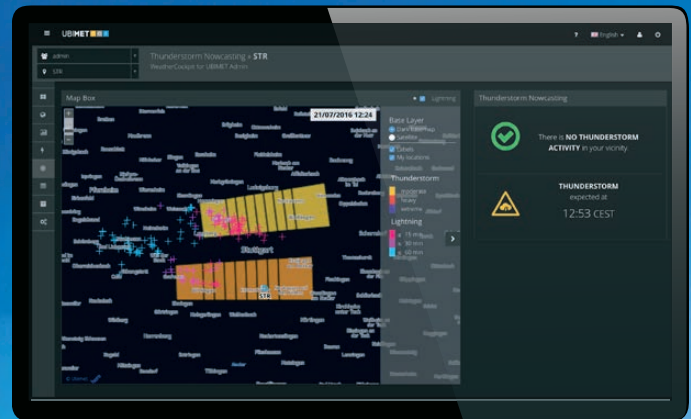


PREPARING FOR
DISRUPTIVE WEATHER
PATTERNS



GUIDANCE ON SAFETY
FOR PASSENGERS AND
EMPLOYEES

OUR F



THUNDERSTORM TRACKING

- Detecting thunderstorms in the vicinity of the airport
- Short-term forecasts of thunderstorm movements
- Calculating estimated thunderstorm arrival time
- Distributing early warnings via Aviation Weather Cockpit, e-Mail and text message



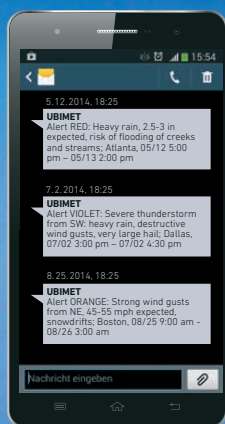
LIGHTNING DETECTION

- Patented 3-D measurement algorithm
- Real-time lightning information
- Accuracy within 75 meters
- Ability to precisely define lightning alarms (e.g. ICAO 8/5 km radius recommendation)



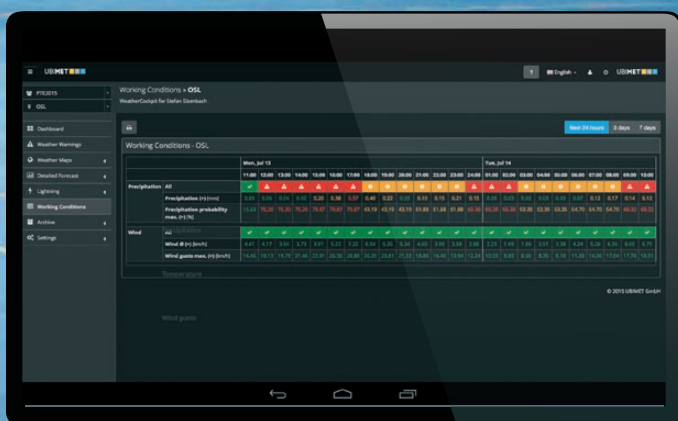
FEATURES

22° 



WARNINGS AND ALERTS

- Weather-related warnings when parameter thresholds are exceeded (e.g. wind, temperature, precipitation, snow)
- Severe weather warnings provided by meteorologists
- Ability to precisely define user groups receiving alerts
- Distributing early warnings via Aviation Weather Cockpit, e-mail and text message



PLANNING CALENDAR

- Optimized planning for ground operation shifts and resources
- Automatic alignment with meteorological forecasts
- Displayed as green / yellow / red days in Aviation Weather Cockpit
- Planning horizon of up to 8 days

YOUR BENEFITS

INCREASE EFFICIENCY



- Reduce ground-handling downtimes
- Maximize airport capacity
- Facilitate automated decision-making
- Anticipate disruptive events earlier
- Adapt resource planning to weather situation

REDUCE COSTS



- Economical resource planning
- Reduce additional costs resulting from over- or understaffing
- Optimize allocation of standby resources
- Reduce cost due to lost capacity
- Reduce accident-related claims

ENHANCE SAFETY



- Enable proactive safety measures by early and accurate weather warnings
- Reduce the risk of weather-related injuries to passengers and employees
- Prevent damages to aircraft and infrastructure
- Enhance overall sense of security
- Increase customer and employee satisfaction

CONTACT

GLOBAL HEADQUARTERS

UBIMET GmbH
ARES Tower
Donau-City-Straße 11
1220 Vienna
AUSTRIA
T +43 1 263 11 22 0
E info@ubimet.com

AUSTRALIA

UBIMET Pty Ltd
Level 20, 350 Queen Street
Melbourne VIC 3000
T +61 3 8488 7610
E australia@ubimet.com

GERMANY

UBIMET Deutschland GmbH
Schönfeldstraße 8
76131 Karlsruhe
T +49 721 663 23 0
E germany@ubimet.com

USA

UBIMET North America Inc.
218 West 18th Street
New York, NY 10011
T +1 1 646 690 4203
E usa@ubimet.com

ABOUT UBIMET

UBIMET is a leading commercial provider of precise meteorology services and severe weather warnings. The global company headquartered in Vienna, Austria has offices in Karlsruhe, Melbourne, Munich, New York and Zurich employing 250 staff from 25 nations. UBIMET provides high-quality meteorological data, forecasts and alerts enabling weather- dependent industries around the globe to increase safety and efficiency.

UBIMET's expertise and reliable weather solutions have convinced customers from industries such as aviation and rail, construction, energy, insurance, media as well as event organizers. UBIMET has delivered accurate weather data for Formula 1 since 2014.

The company was founded as a start-up by Michael Fassnauer and Manfred Spatzierer in Vienna in 2004. The two founders, driven by a passion for meteorology, are still the driving force behind the company today. Red Bull has been a strategic partner since 2012 expanding the company's global reach.

www.ubimet.com

GROUP MEMBERS

MeteoNews AG
Siewerdtstrasse 105
8050 Zürich
Switzerland
T +41 43 288 40 50
E kontakt@meteonews.ch
www.meteonews.ch

nowcast GmbH
Albert-Roßhaupter-Straße 43
81369 Munich
Germany
T +49 89 552 97 13 70
E info@nowcast.de
www.nowcast.de