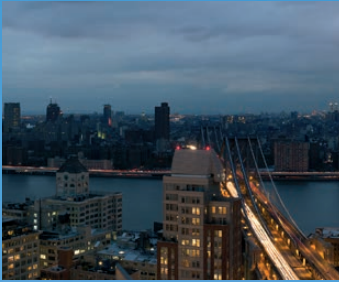


# GRID OPERATIONS SAFETY – TODAY & TOMORROW

THANKS TO HIGHLY PRECISE  
WEATHER SOLUTIONS

## YOUR CHALLENGES



SECURING OF GRID  
STABILITY



INTEGRATION OF  
FLUCTUATING  
RENEWABLE ENERGY  
INTO THE GRID



OPTIMISATION OF  
TRANSFER CAPACITY AND  
TRADING OF RENEWABLE  
ENERGY WITHIN THE  
SCOPE OF THE MARKETING  
ACCORDING TO THE  
GERMAN RENEWABLE  
ENERGIES ACT



PLANNING OF SAFE  
MAINTENANCE AND  
SERVICING WORK



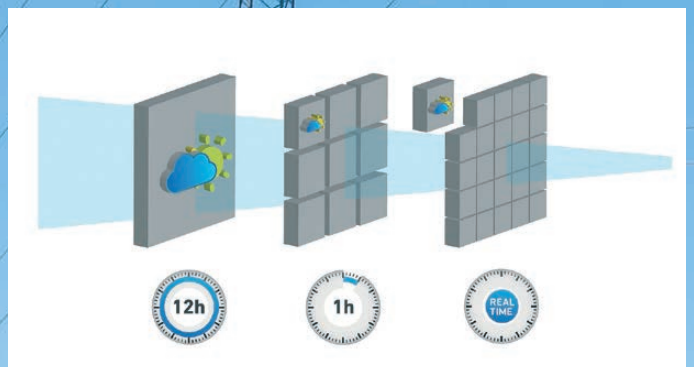
TAKING INTO  
ACCOUNT OF  
THE EXPANSION  
OF RENEWABLE  
ENERGY IN THE GRID  
DEVELOPMENT PLAN

## OUR SOLUTIONS



### RENEWABLE ENERGY

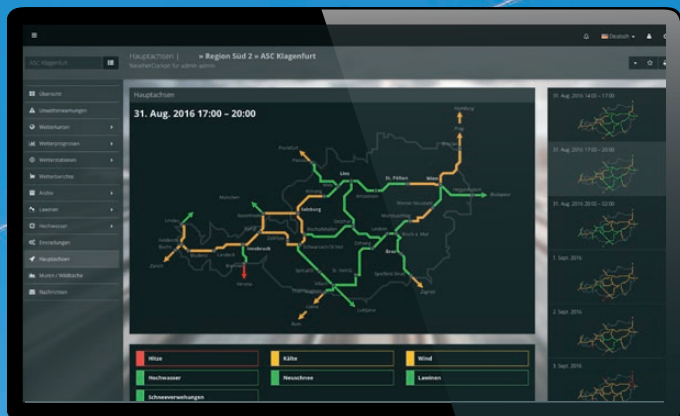
- Highly precise wind, solar and hydropower forecasts
- One-of-a-kind feed-in management solutions
- Comparable wind and solar feed-in long-term series



### WEATHER DATA

- Historical global measurements and climate time series
- Long-term energy meteorological re-analysis data
- Current measurements, satellite and radar images
- Concise lightning tracking system powered by nowcast
- Weather forecasts for municipalities, post code zones, grid regions & lines
- High resolution weather analyses in real time (HYDRA)
- Dedicated, highly precise short-term weather model (RACE)

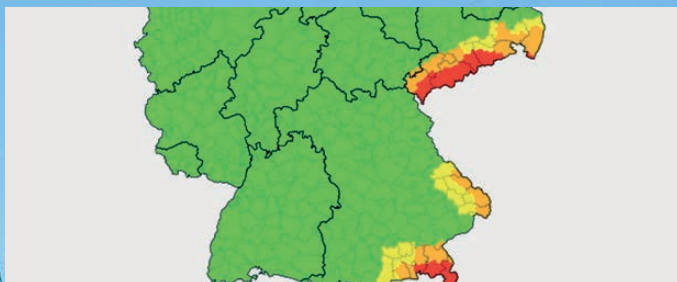




## WEATHER COCKPIT®

- Highly flexible online depiction of weather information
- Live weather data (satellite and radar images, lightning, station data)
- Weather forecasts for municipalities and grid regions
- Real time weather analyses and model forecasts
- Renewable energy and feed-in management forecasts
- Uniform warning and alarm system
- Customer specific visualisations (e.g. lines, transformer stations)

- ✓ Grid stability – increased safety thanks to precise and dependable weather data
- ✓ Transmission capacity – optimisation through weather data based overhead line monitoring
- ✓ Prevents power failures thanks to point concise (storm) and weather information
- ✓ Plausibility checks for overload damages through a concise lightning locating system
- ✓ Marketing in compliance with the German Renewable Energies Act (EEG) – optimisation of the EEG allocation account thanks to improved performance forecasts
- ✓ O&M optimisation – thanks to user enhanced data preparation in the Weather Cockpit®
- ✓ Grid development plan: Optimum planning basis thanks to comparable long-time series



## STORM WARNINGS AND ALARMS

- Our own severe weather centre will keep you informed 24 hours day, 365 days a year
- Warnings
  - Provided by experienced storm meteorologists
  - With individual threshold values
  - Warnings cover all types of storms, sleet, thunderstorms, heavy rain, snowfall
- ISO-certified transmission via e-mail, SMS and Weather Cockpit®

## CONTACT

### GLOBAL HEADQUARTERS

UBIMET GmbH  
ARES Tower  
Donau-City-Straße 11  
1220 Vienna  
Austria  
T +43 1 263 11 22 0  
E [info@ubimet.com](mailto:info@ubimet.com)

### AUSTRALIA

UBIMET Pty Ltd  
Level 20, 350 Queen Street  
Melbourne VIC 3000  
T +61 3 8488 7610  
E [australia@ubimet.com](mailto:australia@ubimet.com)

### GERMANY

UBIMET GmbH  
Schönfeldstraße 8  
76131 Karlsruhe  
Germany  
T +49 721 663 23 0  
E [germany@ubimet.com](mailto:germany@ubimet.com)

### USA

UBIMET North America Inc.  
218 West 18th Street  
New York, NY 10011  
T +1 1 646 690 4203  
E [usa@ubimet.com](mailto:usa@ubimet.com)

## ABOUT UBIMET

UBIMET is a leading commercial provider of precise meteorology services and severe weather warnings. The global company is headquartered in Vienna, Austria and has offices in Karlsruhe, Melbourne, Munich, New York and Zurich employing 250 staff from 25 nations. UBIMET provides high-quality meteorological data, forecasts and alerts enabling weather-dependent industries around the globe to increase safety and efficiency.

UBIMET's expertise and reliable weather solutions have convinced customers from industries such as aviation and rail, construction, energy, insurance, media as well as event organizers. UBIMET has delivered accurate weather data to Formula 1 since 2014, and our services are widely used by the Australian Sailing Team, PGA, FFA and other major sports organisations.

The company was founded as a start-up by Michael Fassnauer and Manfred Spatzierer in Vienna in 2004. The two founders, driven by a passion for meteorology, are still the driving force behind the company today. Red Bull has been a strategic partner since 2012, expanding the company's global reach.

[www.ubimet.com](http://www.ubimet.com)

To accommodate the exacting demands of the energy industry, UBIMET offers:

### INDUSTRY-SPECIFIC KNOW-HOW

- Over 20 experts dedicated entirely to the energy business in Karlsruhe
- The company invests more than 25% of its annual revenues in international research projects in the fields energy & mobility, smart cities and disaster management

### HIGH PRECISION METEOROLOGY

- One of the world's largest weather databases (weather stations, satellites, radar, lightning)
- Access to the world's leading and global weather models (incl. ECMWF and GFS)
- Own, high resolution local weather model RACE (precision up to 100 m)
- Own 24/7 severe weather centre
- Protected method for feed-in management volume forecasts

### ULTRA-MODERN TECHNOLOGICAL INFRASTRUCTURE

- Six global data centres providing more than 70 TB of processed data per day (big data)
- Our Weather Cockpit® provides intuitive and state-of-the-art platform solutions
- Full weather data integration into customer systems thanks to modern API solutions

## GROUP MEMBERS

MeteoNews AG  
Siewerdtstrasse 105  
8050 Zürich  
Switzerland  
T +41 43 288 40 50  
E [kontakt@meteonews.ch](mailto:kontakt@meteonews.ch)  
[www.meteonews.ch](http://www.meteonews.ch)

nowcast GmbH  
Albert-Roßhaupter-Straße 43  
81369 München  
Germany  
T +49 89 552 97 13 70  
E [info@nowcast.de](mailto:info@nowcast.de)  
[www.nowcast.de](http://www.nowcast.de)