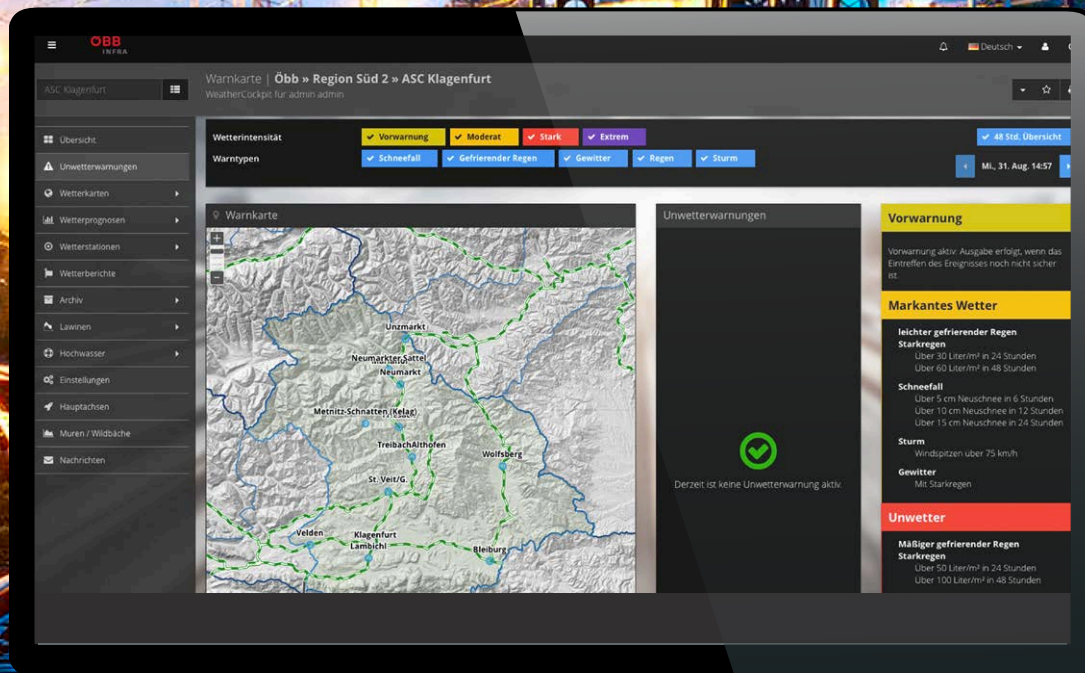


RAIL WEATHER COCKPIT®



HIGH-PRECISION FORECASTS
FOR SAFE & COST EFFICIENT
RAIL OPERATIONS

YOUR CHALLENGES



DOES EXTREME WEATHER OR STRONG WINDS AFFECT TRAIN OPERATIONS?



DO WE NEED TO DISCONTINUE TRACK MAINTENANCE BECAUSE OF HOT WEATHER?



WILL CRITICAL RAILWAY LINE SECTIONS BE FLOODED?



WILL ICE ON THE CATENARY CAUSE DISRUPTIONS?

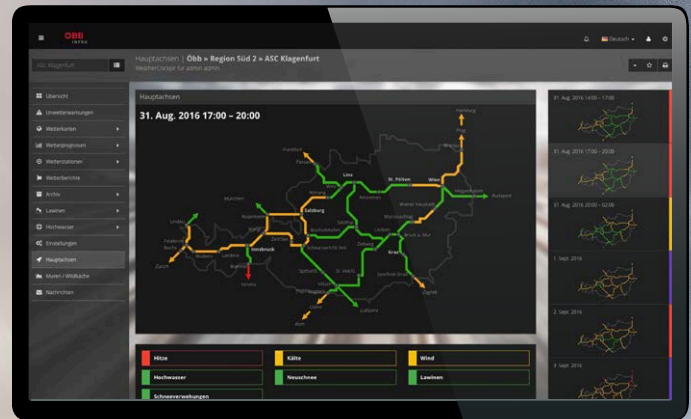


WILL SANDSTORMS CAUSE DRIFTS THAT MIGHT RESULT IN DERAILMENTS?



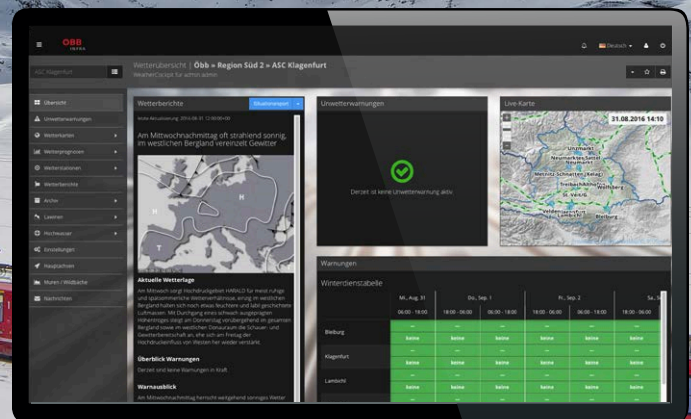
WILL ICE ON THE CATENARY CAUSE DISRUPTIONS?

OUR F



WEATHER MAP

- Real-time overview of current weather situation on all railway lines
- Instantaneous weather information on local phenomena and dangers
- 100% surveillance of ALL railway lines
- Ability to precisely identify every weather situation
- Reliable decision support system with 27,000 weather stations worldwide
- Initiate crew recall or re-crew notification as needed



WINTER SERVICES PLANNING

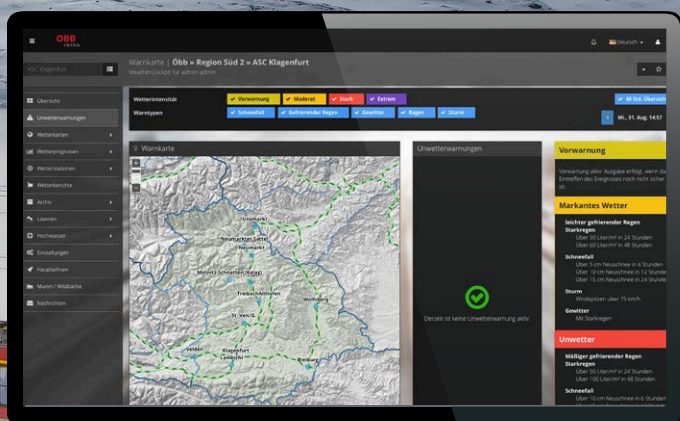
- Optimized planning of winter services for all railway lines
- Automatic alignment with meteorological forecasts
- Displayed as green / yellow / red days in Rail Weather Cockpit®
- Decision Support System enables optimal winter service planning

FEATURES



WARNINGS AND ALERTS

- Weather-related warnings when parameter thresholds are exceeded (e.g. wind, temperature, precipitation, snow)
- One consistent warning and alert system for the entire network
- Severe weather warnings provided by experienced meteorologists
- Ability to precisely define user groups receiving alerts
- Distributing warnings via e-mail and text message



WEATHER FORECASTING & PLANNING

- 3-D Rail Weather Model
- Weather forecasting for all railway lines
- Manage a large number of stations and employees
- Provide special forecasts for critical route sections
- Decision support for resource planning



YOUR BENEFITS

ENHANCE SAFETY



- Reduce the risk of weather-related accidents and incidents
- Prevent derailments and ensuing injuries and fatalities
- Establish network-wide warning system
- Reduce maximum speed or completely discontinue operation if required
- Enable proactive safety measures by early and accurate weather warnings
- Prevent damages to railcars and rail infrastructure
- Enhance overall sense of security

INCREASE EFFICIENCY



- Reduce weather-related delays
- Increase railway line availability by prompt countermeasures
- Enable operators to modify operations to forecast conditions
- Plan for rerouting, slowing, stopping or delaying operations
- Organize winter services (snow and ice removal) for smooth operation
- Initiate crew recall or re-crew notification as needed
- Anticipate disruptive events earlier
- Adapt resource planning to weather situation

REDUCE COSTS



- Optimize switch heating systems with weather data (less CO2/fewer costs)
- Reduce economic damages
- Economical resource planning
- Reduce additional costs resulting from over- or understaffing
- Optimize allocation of standby resources

CONTACT

GLOBAL HEADQUARTERS

UBIMET GmbH
ARES Tower
Donau-City-Straße 11
1220 Vienna
AUSTRIA
T +43 1 263 11 22 0
E info@ubimet.com

AUSTRALIA

UBIMET Pty Ltd
Level 20, 350 Queen Street
Melbourne VIC 3000
T +61 3 8488 7610
E australia@ubimet.com

GERMANY

UBIMET Deutschland GmbH
Schönfeldstraße 8
76131 Karlsruhe
T +49 721 663 23 0
E germany@ubimet.com

USA

UBIMET North America Inc.
81 Prospect St.
Brooklyn, New York 11201
T +1 1 646 690 4203
E usa@ubimet.com

ABOUT UBIMET

UBIMET is the leading weather service provider for railway operators and one-stop shop for high-quality data, a proprietary lightning detection network, weather alerts and tailor-made meteorological solutions. The founder-led company with offices on three continents stands for reliable, highly precise weather information and digital information services for weather-dependent companies. As a global innovation leader, top insurers and energy providers, infrastructure operators, media and sports companies to champions of the new economy place their trust in us. UBIMET offers high-quality meteorological data, forecasts and warnings which enable weather dependent industries around the globe to increase safety and efficiency.

www.ubimet.com

GROUP MEMBERS

MeteoNews AG

Siewerdtstrasse 105
8050 Zürich
Switzerland
T +41 43 288 40 50
E kontakt@meteonews.ch
www.meteonews.ch

nowcast GmbH

Albert-Roßhaupter-Straße 43
81369 Munich
Germany
T +49 89 552 97 13 70
E info@nowcast.de
www.nowcast.de

UBIMET GROUP

